



ACC.16™

65th Annual Scientific Session & Expo

DANAMI3-iPOST

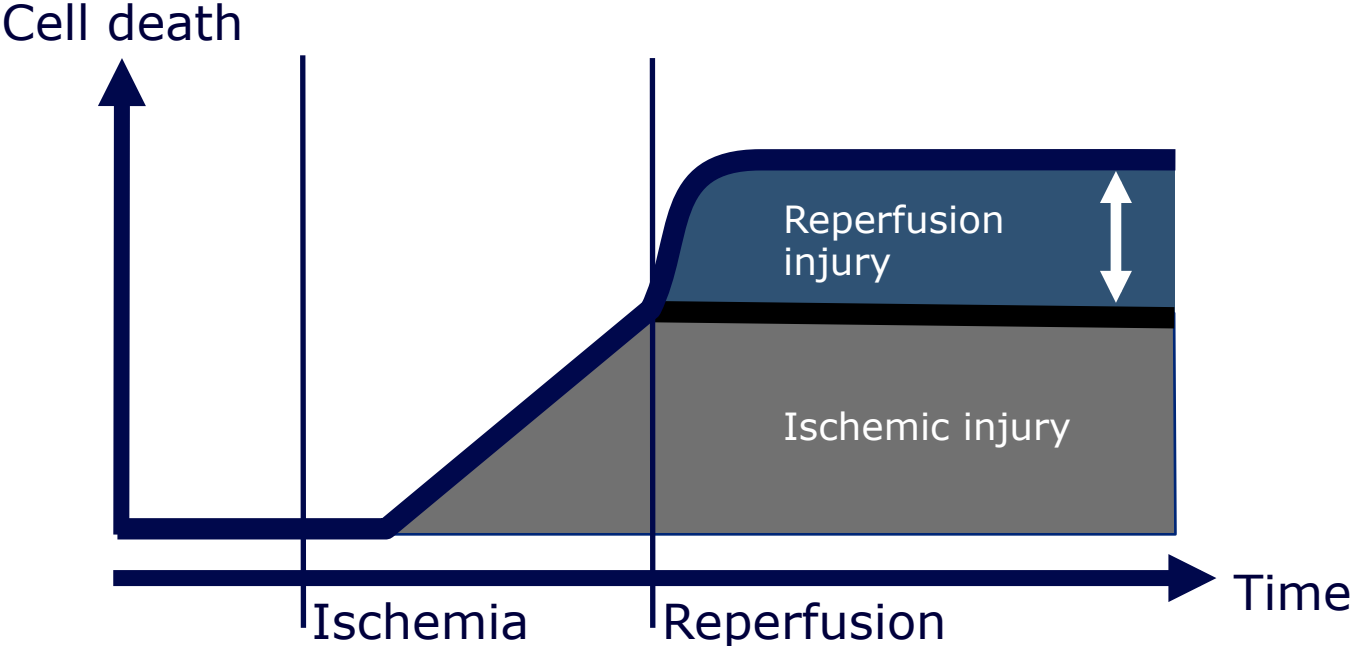
The Third DANish Study of Optimal Acute Treatment of Patients with ST-segment Elevation Myocardial Infarction: ischemic postconditioning during primary PCI

Thomas Engstrøm, MD, DMSci, PhD

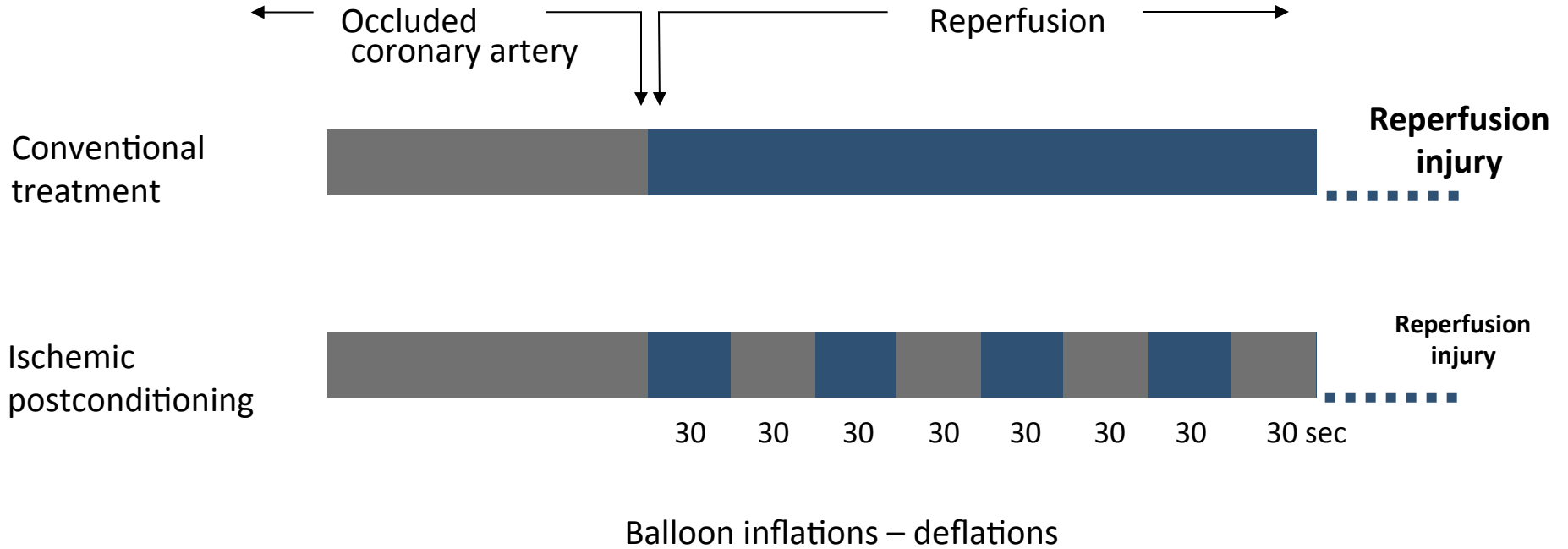
AT THE
INTERSECTION
OF SCIENCE
& CHANGE

#ACC16

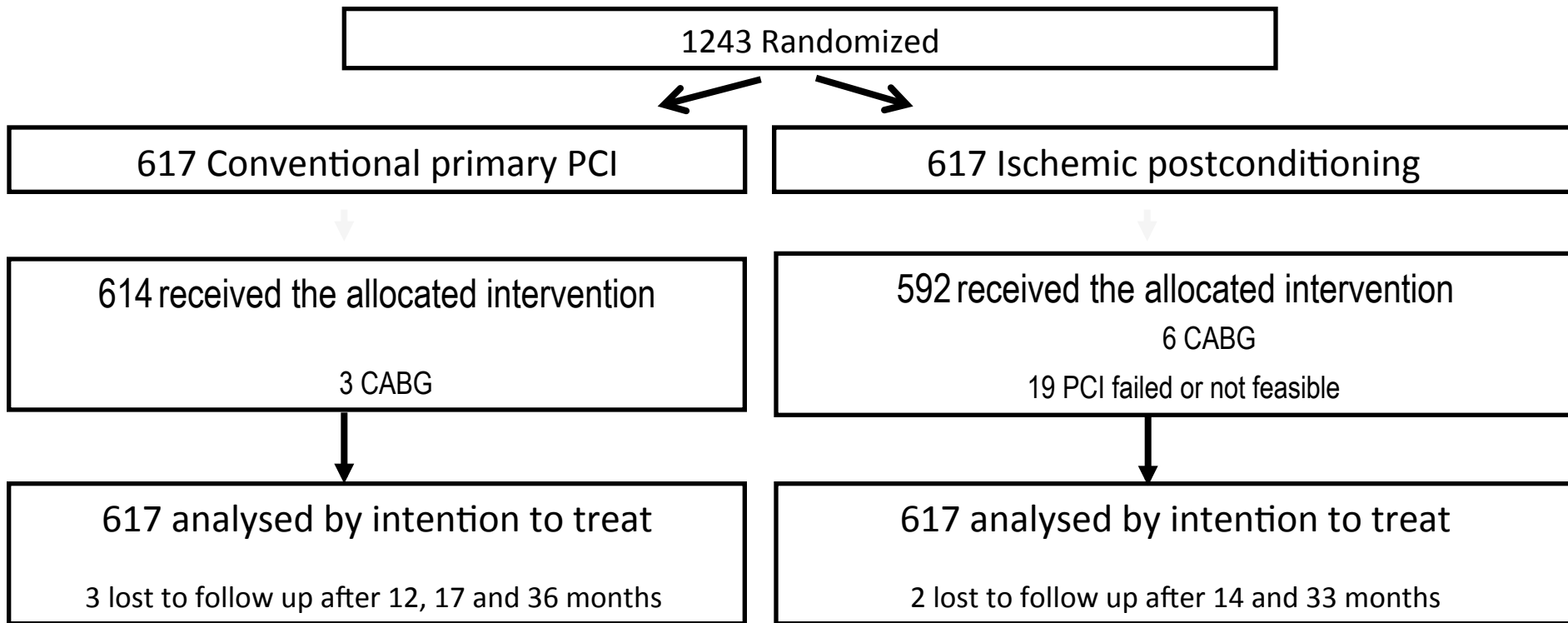
Reperfusion injury



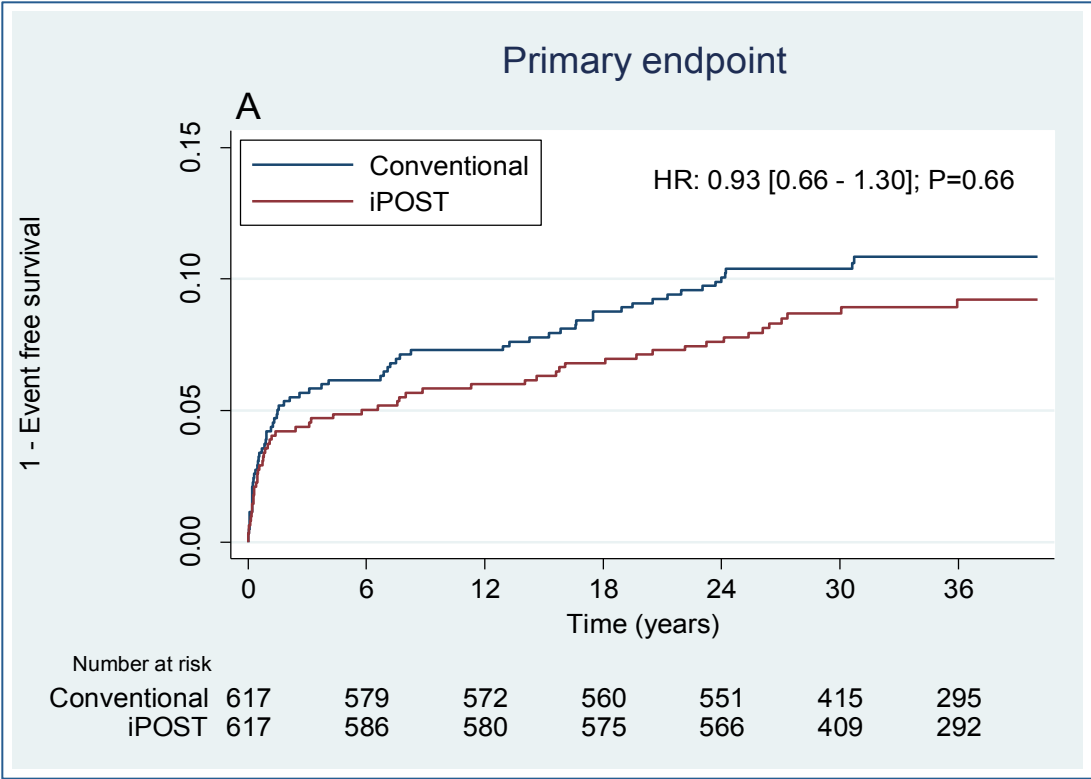
Ischemic postconditioning



Trial flow chart



Primary endpoint – median follow up 37.5 months



DANAMI3-iPOST outcomes

Outcome	Conventional (n = 617)	iPOST (n = 617)	Hazard ratio [95% CI]	p
Primary composite endpoint	69 (11.2)	65 (10.5)	0.93 [0.66 – 1.30]	0.66
All-cause mortality	50 (8.1)	38 (6.2)	0.75 [0.49 – 1.14]	0.18
Heart failure hospitalization	30 (4.9)	30 (4.9)	0.99 [0.60 – 1.64]	0.96
Cardiovascular mortality	30 (4.9)	26 (4.2)	0.86 [0.51 – 1.45]	0.56
Recurrent myocardial infarction	29 (4.7)	33 (5.4)	1.13 [0.68 – 1.86]	0.64
TVR by PCI	14 (2.3)	19 (3.1)	1.35 [0.67 – 2.68]	0.40
TVR by CABG	2 (0.3)	6 (1.0)	2.97 [0.60 – 14.72]	0.28

DANAMI3-iPOST outcomes

	Conventional (n = 299)	iPOST (n = 275)	P
LVEF all patients (%)	50.8	52.7	<0.05
LVEF anterior infarcts (%)	45.9	49.5	0.04
Number of patients with LVEF >45%	215 (72%)	220 (80%)	0.015